

APPENDIX N: ONTONAGON COUNTY

Additional material about Ontonagon County is provided in Section I of the main report.

Section I: SUMMARY REPORT

A. Introduction

The regional jail feasibility study has been funded by the Michigan Department of Corrections and is being administered by UPCAP. Rod Miller, project director for the contractor, CRS Inc., has visited Ontonagon County two times since the study began in September 2008. He has met with the sheriff, county commissioners, and other officials and county personnel.

The study examined jail conditions, occupancy, and plans for each county in Michigan's Upper Peninsula (UP) as the foundation for identifying potential partnerships. The study assisted Schoolcraft County officials to analyze the advisability of converting Camp Manistique for use as a new county jail. Recently, assistance was provided to Iron County and Iron Township officials to help them examine potential future uses for Camp Ottawa.

B. Jail Design, Construction and Capacity

The Ontonagon County Jail opened in 1965 with a capacity of 19. The facility has not been renovated or expanded since it opened 44 years ago, but repairs were made to the jail in 2009.

The facility design and construction is typical for the 1960s—a "linear" layout that aligns a series of congregate cells along a central corridor. A barred corridor runs between the front of each cell and the exterior wall. Officers use this corridor to make rounds.

The sheriff's department administrative offices are located in the same facility. Inmates are brought into the facility through a security garage, but intake and booking areas of the jail are not very secure.

Inmate housing is not near the front office, dispatch, and intake area—where employees are typically stationed. Inmates may not be heard outside of the cell areas without the use of electronic equipment.

A series of closed circuit television (CCTV) cameras have been installed throughout the jail. The cameras may be monitored in the front of the facility, although the jail bars interfere with inmate visibility.

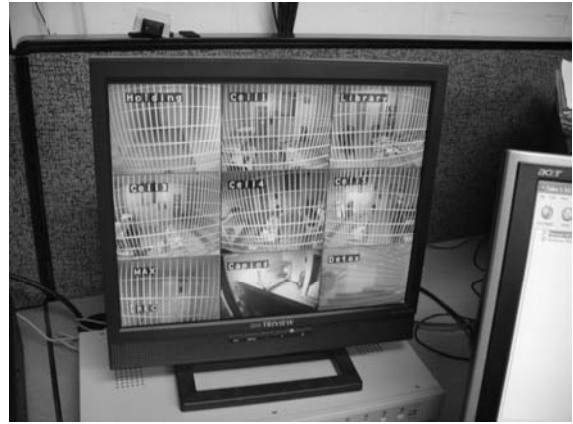
Most inmates are idle while confined, although some are allowed to work around the jail if their security level is low. Televisions are provided in front of most cells. There is an outdoor exercise yard that is used during some seasons.

Figure I.1 provides photos of the jail.

Figure I.1: Photos of Ontonagon County Jail



Exercise yard at rear of jail. Note low security fencing.



Monitor in booking area, showing video camera scenes.



Main jail corridor, cell entrances on left and right.



Congregate cell, officer corridor on other side of bars.



View into officer corridor, congregating cell on right.



Short term holding cell.

C. Standards and Compliance

The jail was found to be in full compliance with Michigan Administrative Rules for Jails and Lockups after its last inspection by the Michigan Department of Corrections.

Compliance with Michigan standards does *not* provide sufficient protection from liability for county officials, because the scope and breadth of the standards fall far short of minimum requirements set by the courts. Appendix Q presents an analysis of the current Michigan standards compared to the new national Core Jail Standards that provide a benchmark against which to measure minimum requirements. Michigan standards address less than 25% of the topics and issues presented in the Core Jail Standards.

D. Jail Occupancy

The jail population fluctuates significantly from day to day and month to month. Figure I.2 presents the number of admissions and average daily population by month from June 2006 to April 2009.

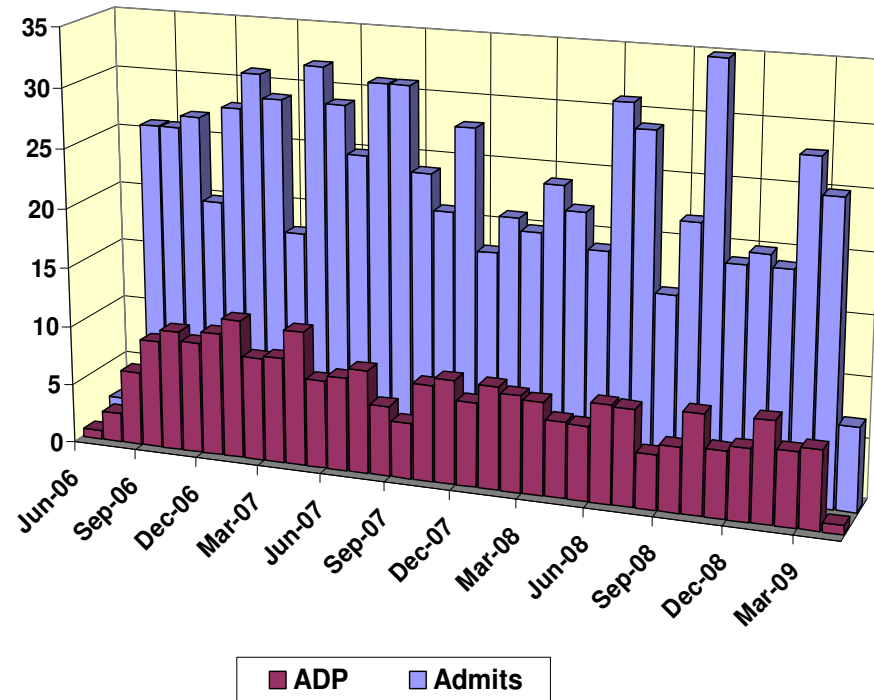
**Figure I.2: Admissions and Average Daily Population (ADP)
June 2006 – April 2009**

	Admits	ADP			Admits	ADP
Jun-06	2	0.7		Jan-08	21	8.6
Jul-06	3	2.5		Feb-08	20	8.1
Aug-06	26	6.2		Mar-08	24	7.7
Sep-06	26	9.1		Apr-08	22	6.3
Oct-06	27	10.1		May-08	19	6.2
Nov-06	20	9.3		Jun-08	31	8.2
Dec-06	28	10.3		Jul-08	29	8.0
Jan-07	31	11.6		Aug-08	16	4.6
Feb-07	29	8.6		Sep-08	22	5.4
Mar-07	18	8.9		Oct-08	35	8.3
Apr-07	32	11.3		Nov-08	19	5.6
May-07	29	7.4		Dec-08	20	6.0
Jun-07	25	7.8		Jan-09	19	8.4
Jul-07	31	8.6		Feb-09	28	6.2
Aug-07	31	5.9		Mar-09	25	6.6
Sep-07	24	4.7		Apr-09	7	0.8
Oct-07	21	8.0				
Nov-07	28	8.7				
Dec-07	18	7.0				

ADP averaged 7.2 for the period, but ranged from a low of 0.7 to a high of 11.6. There were 25 admissions in the average month, but as few as two in one month and 35 in another.

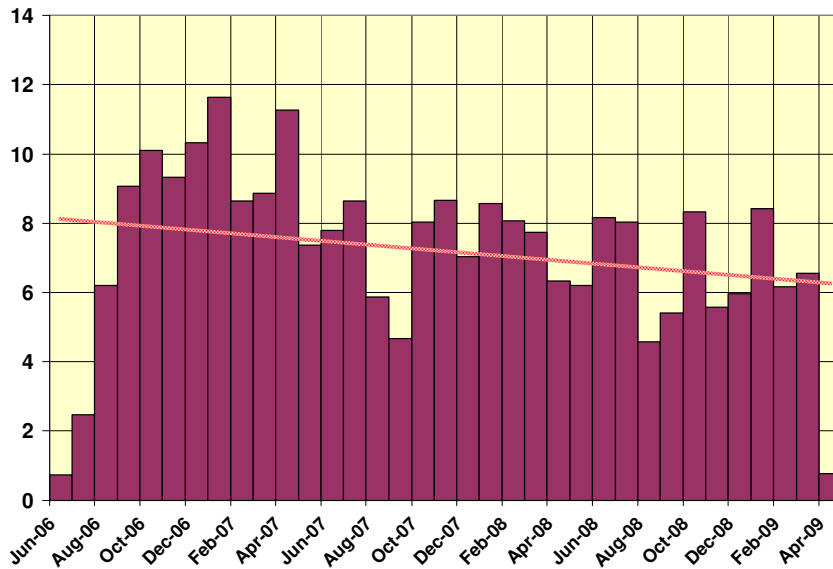
Figure I.3 illustrates the variation in admissions and ADP.

Figure I.3: Admissions and ADP, June 2006 – April 2009



Daily counts vary even more, but the jail has not been full to capacity in recent years. Figure I.4 focuses on ADP by month and shows a trend line that was generated by a linear regression analysis of the monthly ADP.

Figure I.4: Monthly ADP and Trend Line

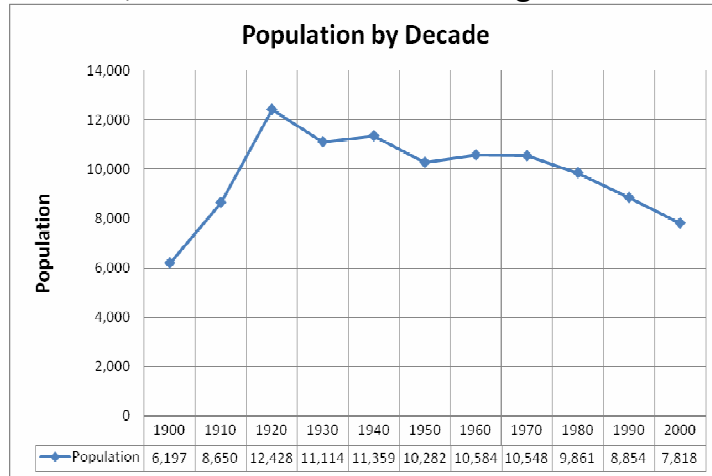


E. County Population and Criminal Justice System

Figure I.5 depicts some of the external forces and factors that might explain the changes in the jail population.

Figure I.5: Population, Arrests, Offenses and Court Filings

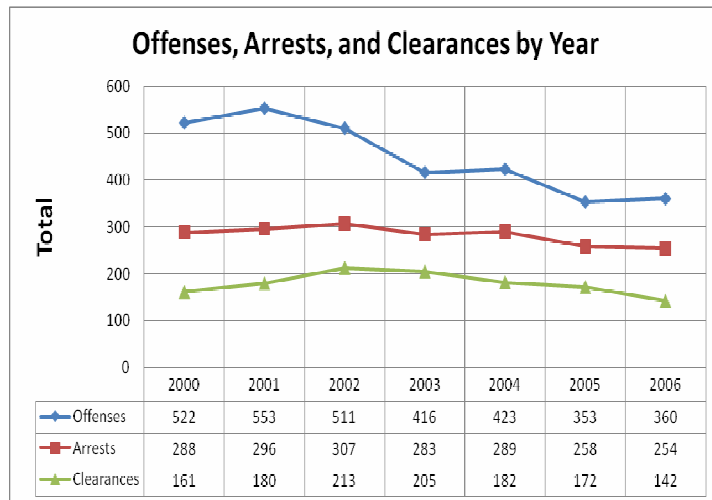
The county general population peaked in 1920 and has declined steadily since then.



Reported offenses fell from 2000 to 2006.

The number of arrests was relatively constant from 2000 to 2006.

Clearances increased slightly for three years but fell again.

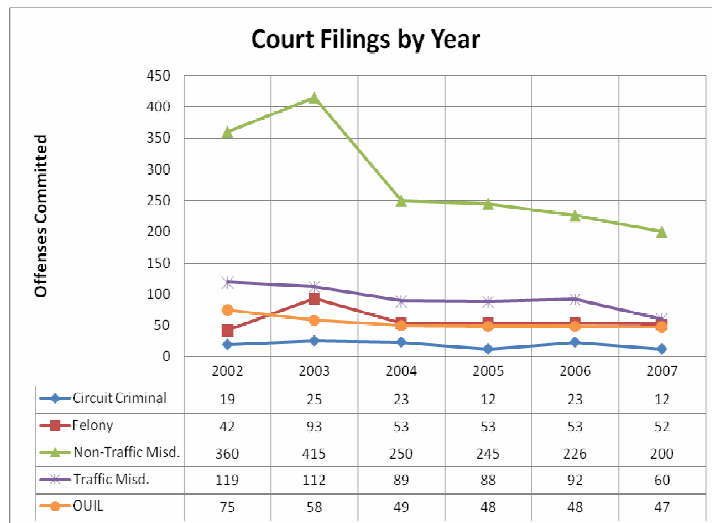


No categories of court filings increased from 2002 to 2007.

Non-traffic misdemeanor filings fell sharply in 2004 and continued to decline in subsequent years.

Traffic misdemeanors fell slowly over the six years, as did OUIL filings.

Circuit Court criminal filings were stable throughout the period.



F. Trends and Forecasts

A lack of historical jail data prevents the consultants from calculating trends and forecasts of future jail use. Figure I.4 showed a trend line with a negative slope, but this is not statistically reliable as an indication of future needs.

Lack of inmate-specific data also prevents the analysis of inmate characteristics and the identification of trends. Ontonagon County is one of a few counties in Michigan that does not submit inmate data to the Michigan Department of Corrections JPIS program. Sheriff Gravier worked with the jail computer system to generate lists and reports that were helpful.

Functional Capacity

While the nominal capacity of the Ontonagon County Jail is 19, the “functional” capacity is 25 percent less—15 inmates. In small jails such as Ontonagon, it is rare that the mix of inmates on a given day will fit the number of beds in each housing unit. Standards and caselaw require inmates to be classified and separated according to several criteria. Meeting classification requirements invariably leaves empty beds in some housing units.

A Worst Case Scenario

The preceding pages describe the jail inmate population produced by past policies and practices. U.P. officials face many uncertainties with regard to future jail use. Many, if not most, of the decisions that result in jail use are not within the control of county commissioners or sheriffs.

The policies and practices of the Michigan Department of Corrections (MDOC) have a major impact on the demand for jail beds. During the course of this study, MDOC closed several state prisons and prison camps; since 2002 the MDOC has saved an estimated \$570 million by consolidating facilities and operations and through other cost reduction measures. A bill introduced in the Michigan Legislature in January 2010 would repeal the 1998 “truth in sentencing” law that requires prisoners to be confined for at least their minimum sentences. Officials estimate that the bill, if passed, would result in the release of 5,650 prisoners on early parole, and 1,900 prisoners to community-based halfway houses.

In January, 2010, John Cordell, an MDOC spokesman, told reporters that if the bill passes, most prisoners would serve at least 85 percent of their minimum sentences. Cordell also told reporters that the only sustainable way to reduce MDOC costs is by “reducing the size of the system.”

Jail populations would also increase if the legislature changes the minimum length of sentence for admission to the state correctional system. Other states have moved prisoners from state facilities to jails in this manner. The legislature could also change sentencing guidelines to force judges to send more offenders to jails instead of state prisons.

Changes at the state level could expand jail use by increasing the number of:

- Sentenced felons who violate parole by committing new crimes or by failing to comply with their conditions of parole.
- Former prison inmates who are not on parole, who are charged with new crimes.
- Offenders convicted of high misdemeanors that were reduced from felony charges.
- Felony offenders who are sentenced to jail instead of prison because of changes in sentencing guidelines.

Hopefully, these additional inmates will not arrive at U.P. jails. If they do, the consultants believe jail populations could be increased by as much as 50 percent.

Because of these uncertainties, county officials must build flexibility in their jails as they plan to renovate, expand or replace existing facilities.

G. Adequacy of Current Facilities

For now, the capacity of the jail is sufficient to meet current demands. There are many forces that suggest an increase in the jail population will be experienced in the near future. If the jail population increases, the jail will near its functional capacity and crowding could result.

Although there may be sufficient beds at this time, there are still serious deficiencies with the Ontonagon County Jail.

The design of the jail is outdated and makes it difficult for staff to effectively supervise inmates. Using CCTV eases this problem but does not solve it.

The condition of the jail is poor and is worsening. Maintaining the 44-year-old jail has become very difficult as various systems have decayed and are failing. Finding parts for old locking systems is a growing challenge and will become even more difficult over time. The current jail has provided 44 years of 24-hour service and its condition will continue to degrade until it is replaced.

The lack of adequate space for activities, services, and programs will become more acute as inmates spend longer periods of confinement in the jail.

H. Plans

The county has no plans for expanding or replacing the jail at this time.

I. Comments and Recommendations

In many ways, the current jail situation is marginal at best. The facility is decaying and was not designed nor constructed to meet modern standards. Staffing is minimal, and road patrol deputies are frequently called in to supplement the jail officers. It is likely that the jail will be asked to house more inmates who will spend longer periods of time in the jail.

The sheriff and county officials should use the new national Core Jail Standards to evaluate jail conditions and operations. Appendix Q explores these standards and shows how compliance with current Michigan standards does not protect the county from liability.

Ontonagon County officials may want to approach their Houghton County counterparts to discuss potential long-term arrangements to house overflow inmates from Ontonagon County when (if) the jail fills up. Houghton County is actively attempting to build a new jail.

Houghton County offers the most likely source of assistance, because Baraga County is already seriously overcrowded, and Gogebic County has been sending its overflow of inmates to Iron County, Wisconsin. Iron County, Michigan, might also be able to house inmates for Ontonagon County.

A range of potential solutions to future jail needs are reviewed and analyzed in the main report (Part I Sections M and N). These include consideration of possible partnerships with other counties to meet future bedspace needs.

Additional comments and recommendations are provided in the main report (Part I, Section N), including a review of options to meet future jail needs and 30-year life cycle cost figures.

SECTIONS II, III and IV: Data and Information for Planning and Design

The following pages present a wide range of information and data that have been used to develop this report and which should be useful in moving forward with the development of a new jail.

List of Figures in Sections II, III and IV

Section II: POPULATION AND CRIMINAL JUSTICE SYSTEM CHARACTERISTICS

- Figure II.1: US Census Age Demographics Data by Decade
- Figure II.2: Historical Population Counts by Decade
- Figure II.3: Offenses by Type (2000 – 2006)
- Figure II.4: Arrests by Crime (2000 – 2006)
- Figure II.5: Index and Non-Index Clearance Rates (2000 – 2006)
- Figure II.6: Officers Employed and Officer Assault Data (2000 – 2006)
- Figure II.7: Circuit/Probate Court Filing Trends by Case Group (2002 – 2007)
- Figure II.8: Circuit Court Total Filings (2002 – 2007)
- Figure II.9: Circuit Court Clearance Rates by Case Group (2005 – 2007)
- Figure II.10: Probate Court Clearance Rates by Case Group (2005 – 2007)
- Figure II.11: District Court Filings by Type (2002 – 2007)
- Figure II.12: District Court Clearance Rates by Case Group (2005 – 2007)
- Figure II.13: Juvenile and CP Filings by Type (2004 – 2007)
- Figure II.14: CPP Overview (2002 – 2007)
- Figure II.15: Disposition by Quarter (2007 – 2008)
- Figure II.16: OUIL3 Disposition (2007)
- Figure II.17: Straddle Cell Rates (2007)
- Figure II.18: PV Technical Disposition by Guidelines (2007)
- Figure II.19: PV Technical Disposition by Offense Group (2007)
- Figure II.20: Overall Disposition by Offense Group (2007)
- Figure II.21: Overall Disposition by Offense Group by Guidelines (2007)

Section III: HISTORICAL DATA FROM STATE JPIS SYSTEM, 2004 - 2007

- Figure III.1: Annual ADP (2004 – 2008)
- Figure III.2: Average Length of Stay of All Inmates (2004 – 2007)
- Figure III.3: Annual Admissions (2004 – 2008)
- Figure III.4: Annual Releases (2004 – 2007)
- Figure III.5: Top Ten Offense Categories by ADP 2004 – 2008

Section IV: INMATE CHARACTERISTICS: 2003 - 2007

- Figure IV.1: Admissions and Detention Days (2003 – 2007)
- Figure IV.2: Admissions vs. Detention Days (2007)
- Figure IV.3: Class of Crime at Admission (2007)
- Figure IV.4: Percent Det. Days by Admit Crime Class (2003 – 2007)
- Figure IV.5: Number of Charges at Admission (2007)
- Figure IV.6: Percent Det. Days by Number of Charges at Admission (2003 – 2007)
- Figure IV.7: Percent Det. Days by Gender (2003 – 2007)
- Figure IV.8: Age at Admission (2007)
- Figure IV.9: Percent Det. Days by Age (2003 – 2007)
- Figure IV.10: Length of Stay Categories (2007)
- Figure IV.11: Percent Det. Days by Length of Stay (2003 – 2007)
- Figure IV.12: Highest Grade Completed (2007)
- Figure IV.13: Percent Det. Days by Education (2003 – 2007)
- Figure IV.14: Marital Status at Admission (2007)
- Figure IV.15: Percent Det. Days by Marital Status (2003 – 2007)
- Figure IV.16: Race (2007)
- Figure IV.17: Percent Det. Days by Race (2003 – 2007)
- Figure IV.18: Reason for Release (2007)
- Figure IV.19: Percent Det. Days by Reason for Release (2003 – 2007)
- Figure IV.20: Security Class Code (2007)
- Figure IV.21: Percent Det. Days by Security Code (2003 – 2007)
- Figure IV.22: Number of Previous Misdemeanor Convictions (2007)
- Figure IV.23: Percentage Det. Days with Previous Misdemeanor Convictions (2003 – 2007)
- Figure IV.24: Number of Previous Felony Convictions (2007)
- Figure IV.25: Percent Det. Days with Previous Felony Convictions (2003 – 2007)
- Figure IV.26: Percent Det. Days with Previous Assault Felony Convictions (2003 – 2007)

Section II: POPULATION AND CRIMINAL JUSTICE SYSTEM CHARACTERISTICS

Figure II.1: US Census Age Demographics Data by Decade

Year	Total Population	Age Demographics								
		< 5	5 - 24	25 - 44	45 - 54	55 - 59	60 - 64	65 - 74	75 - 84	85+
1990	8,854	536	2,132	2,357	1,087	532	490	936	658	126
2000	7,818	341	1,607	1,822	1,229	563	566	874	572	244

Figure II.2: Historical Population Counts by Decade

Year	Population
2000	7,818
1990	8,854
1980	9,861
1970	10,548
1960	10,584
1950	10,282
1940	11,359
1930	11,114
1920	12,428
1910	8,650
1900	6,197

Figure II.3: Offenses by Type (2000 – 2006)

Year	Murder	Rape	Robbery	Aggravated Assault	Burglary	Larceny	Motor Vehicle Theft	Arson
2006	0	3	0	9	15	30	5	0
2005	0	2	0	6	14	24	7	1
2004	0	2	0	11	26	51	7	4
2003	0	6	0	1	26	51	7	5
2002	0	15	1	9	33	66	6	0
2001	0	6	0	16	50	46	7	1
2000	0	11	0	2	34	36	12	1

Year	Negligent Manslaughter	Nonaggravated Assault	Forgery and Counterfeiting	Fraud	Embezzlement	Stolen Property	Vandalism	Weapons
2006	0	54	2	14	1	1	26	1
2005	0	72	2	19	1	0	27	1
2004	1	63	4	18	2	2	24	1
2003	0	54	3	22	5	0	31	1
2002	0	63	1	13	0	1	42	0
2001	0	69	1	14	0	1	50	3
2000	1	79	0	17	1	0	43	0

Year	Prostitution	Sex Offenses	Narcotics Laws	Gambling	Family & Children	DUI Alcohol or Narcotics	Liquor Laws	Disorderly Conduct	All Other
2006	0	11	18	0	4	42	29	14	81
2005	0	5	10	0	0	39	17	25	81
2004	0	3	27	0	3	48	22	14	90
2003	0	4	17	0	3	56	26	7	91
2002	0	9	12	0	1	79	17	16	127
2001	0	4	26	0	3	79	32	25	120
2000	0	10	16	0	3	85	39	17	115

Figure II.4: Arrests by Crime (2000 – 2006)

Year	Murder	Rape	Robbery	Aggravated Assault	Burglary	Larceny	Motor Vehicle Theft	Arson
2006	0	1	0	7	1	11	0	0
2005	0	2	0	5	5	3	3	0
2004	0	0	0	8	7	20	2	2
2003	0	4	0	0	10	15	3	2
2002	0	4	0	6	4	15	2	0
2001	0	3	0	8	7	9	3	0
2000	0	5	0	0	2	3	3	0

Year	Negligent Manslaughter	Nonaggravated Assault	Forgery and Counterfeiting	Fraud	Embezzlement	Stolen Property	Vandalism	Weapons
2006	0	38	1	5	0	0	4	1
2005	0	54	3	9	2	0	13	0
2004	1	43	1	10	8	1	5	1
2003	0	38	2	6	2	0	8	0
2002	0	52	0	3	0	0	13	0
2001	0	32	0	7	0	3	6	4
2000	0	41	0	3	0	0	4	0

Year	Prostitution	Sex Offenses	Narcotics Laws	Gambling	Family & Children	DUI Alcohol or Narcotics	Liquor Laws	Disorderly Conduct	All Other
2006	0	4	14	0	3	50	43	6	65
2005	0	2	5	0	0	37	24	20	71
2004	0	3	25	0	2	48	24	8	70
2003	0	3	17	0	3	57	28	5	80
2002	0	5	4	0	1	84	15	6	93
2001	0	2	18	0	0	85	28	9	72
2000	0	4	6	0	0	91	52	8	66

Figure II.5: Index and Non-Index Clearance Rates (2000 – 2006)

Year	Index Offenses	Index Cleared	Index Clearance Rate	Non-Index Offenses	Non-Index Cleared	Non-Index Clearance Rate	Total Offenses	Total Cleared	Total Clearance Rate
2006	27	13	48%	136	129	95%	163	142	87%
2005	27	12	44%	173	160	92%	200	172	86%
2004	57	28	49%	166	154	93%	223	182	82%
2003	49	27	55%	193	178	92%	242	205	85%
2002	55	12	22%	241	201	83%	296	213	72%
2001	76	19	25%	278	161	58%	354	180	51%
2000	58	6	10%	264	155	59%	322	161	50%

Figure II.6: Officers Employed and Officer Assault Data (2000 – 2006)

Year	Total Full Time Officers	Male Officers	Female Officers	Civilians	Estimated Population Served	Officers Killed	Officers Assaulted
2006	12	11	1	0	7,345	0	0
2005	9	9	0	3	7,544	0	0
2004	9	9	0	3	7,596	0	0
2003	9	9	0	3	7,726	0	0
2002	10	10	0	4	7,906	0	0
2001	10	10	0	4	7,818	0	0
2000	14	13	1	0	7,818	0	0

Figure II.7: Circuit/Probate Court Filing Trends by Case Group (2002 – 2007)

Year	Circuit Civil	Circuit Criminal	Circuit Family	Probate	Total
2002	17	19	140	74	250
2003	19	25	151	51	246
2004	21	23	123	77	244
2005	19	12	167	63	261
2006	21	23	109	66	219
2007	21	12	135	83	251

Figure II.8: Circuit Court Total Filings (2002 – 2007)

Court	Year	Filings
C32	2002	176
	2003	195
	2004	167
	2005	198
	2006	153
	2007	168

Figure II.9: Circuit Court Clearance Rates by Case Group (2005 – 2007)

Case Group	2005			2006			2007		
	In	Out	Clearance	In	Out	Clearance	In	Out	Clearance
Criminal	14	21	150.0%	24	19	79.2%	12	15	125.0%
Appeals from Courts of Limited Jurisdiction	0	0	N/A	0	0	N/A	1	1	100.0%
Appeals from Administrative Agencies	0	1	N/A	3	3	100.0%	0	0	N/A
Extraordinary Writs	0	0	N/A	0	0	N/A	1	1	100.0%
General Civil	15	13	86.7%	16	17	106.3%	17	18	105.9%
Auto Negligence	1	0	0.0%	0	1	N/A	0	0	N/A
Other Civil Damage	3	6	200.0%	2	5	250.0%	2	1	50.0%
Other Civil	0	0	N/A	0	0	N/A	0	0	N/A
Divorced Without Children	11	16	145.5%	16	15	93.8%	14	12	85.7%
Divorced With Children	16	16	100.0%	10	15	150.0%	8	7	87.5%
Paternity	7	3	42.9%	5	5	100.0%	2	3	150.0%
Custody, Other Support, Other Domestic Relations	9	6	66.7%	11	9	81.8%	13	16	123.1%
Delinquency	68	63	92.6%	25	22	88.0%	51	54	105.9%
Child Protective Proceedings	6	4	66.7%	4	5	125.0%	11	9	81.8%
Designated Juvenile	0	0	N/A	0	0	N/A	0	0	N/A
Juvenile Traffic Ordinance	2	2	100.0%	0	0	N/A	0	0	N/A
Adoption Proceedings	4	4	100.0%	5	5	100.0%	2	1	50.0%
Name Change, Emancipation, Infectious Disease	1	1	100.0%	1	1	100.0%	0	0	N/A
Personal Protection	41	40	97.6%	27	28	103.7%	28	28	100.0%
Ancillary	0	0	N/A	0	0	N/A	0	0	N/A

Figure II.10: Probate Court Clearance Rates by Case Group (2005 – 2007)

Case Group	2005			2006			2007		
	In	Out	Clearance	In	Out	Clearance	In	Out	Clearance
Estates and Trusts	34	33	97.1%	32	33	103.1%	32	32	100.0%
Guardianships and Conservatorships	22	21	95.5%	24	22	91.7%	39	43	110.3%
Mental Illness and Judicial Comments	9	8	88.9%	9	10	111.1%	8	8	100.0%
Civil	0	1	N/A	2	0	0.0%	0	2	N/A
Miscellaneous	1	1	100.0%	1	1	100.0%	6	6	100.0%

Figure II.11: District Court Filings by Type (2002 – 2007)

Year	Felony	Non-Traffic Misdemeanor	Non-Traffic Civil Infraction	Traffic Civil Infraction	Traffic Misdemeanor	OUIL	Civil	Total
2002	42	360	9	1,512	119	75	183	2,300
2003	93	415	35	1,442	112	58	171	2,326
2004	53	250	51	1,063	89	49	161	1,716
2005	53	245	25	1,173	88	48	176	1,808
2006	53	226	21	1,057	92	48	170	1,667
2007	52	200	73	780	60	47	176	1,388

Figure II.12: District Court Clearance Rates by Case Group (2005 – 2007)

Case Group	2005			2006			2007		
	In	Out	Clearance	In	Out	Clearance	In	Out	Clearance
Felony (Criminal)	73	79	108.2%	84	88	104.8%	84	83	98.8%
Felony (Traffic)	3	4	133.3%	7	8	114.3%	16	15	93.8%
Misdemeanor (Criminal)	270	277	102.6%	275	281	102.2%	241	240	99.6%
Drunk Driving	49	47	95.9%	59	64	108.5%	42	44	104.8%
Misdemeanor (Traffic)	103	103	100.0%	114	116	101.8%	74	74	100.0%
Civil	117	109	93.2%	115	112	97.4%	128	127	99.2%
Summary Civil	60	55	91.7%	55	62	112.7%	49	48	98.0%
Civil Infraction (Traffic)	1174	1167	99.4%	1058	1055	99.7%	780	793	101.7%
Civil Infraction (Non-Traffic)	25	24	96.0%	21	22	104.8%	73	73	100.0%
Parking	0	0	N/A	0	0	N/A	3	3	100.0%

Figure II.13: Juvenile and CP Filings by Type (2004 – 2007)

Year	Designated Juvenile New Filings	Delinquency New Filings	Child Protective New Filings	Children Associated with New Child Protective Filings	Traffic and Ordinance New Filings
2004	0	54	2	3	1
2005	0	67	6	7	2
2006	0	25	4	9	0
2007	0	50	11	15	0

Figure II.14: CPP Overview (2002 – 2007)

Year	Beginning Pending	Children Associated	New Filings	Children Associated	Children in New Filings w/ Prior Court Jurisdiction	Reopened	Children Associated with Reopened	Termination Petitions; Original or Amended
2002	3	3	8	12	3	0	0	5
2003	3	6	4	6	0	0	0	2
2004	2	3	2	3	0	0	0	1
2005	2	3	6	7	2	0	0	2
2006	1	1	4	9	0	0	0	0
2007	0	0	11	15	0	0	0	0

Year	Children in Termination Petitions	Termination Petitions; Supplemental	Children in Termination Petitions; Supplemental	Supplemental Petitions	Children in Supplemental Petitions	Jury Verdict	Bench Verdict	Admission/No Contest
2002	6	0	0	1	1	0	1	3
2003	6	0	0	3	8	0	1	2
2004	3	1	1	0	0	0	0	0
2005	4	0	0	0	0	0	0	0
2006	0	1	1	1	1	0	0	4
2007	0	1	3	1	1	0	0	4

Year	Dismissed / Withdrawn	Transferred	Not Authorized	Children who are Temporary Court Wards	Children who are Temporary State Wards	Children who are Permanent Wards	Children Pending Adjudication
2002	4	0	0	5	0	1	3
2003	3	0	0	8	0	1	8
2004	2	0	0	3	0	3	1
2005	4	0	0	2	2	0	0
2006	1	0	0	8	0	0	0
2007	4	1	0	10	4	0	0

Figure II.15: Disposition by Quarter (2007 – 2008)

A. Count

Quarter	Prison	Jail	Jail/Prob.	Prob.	Other	Total
2007 3rd Qtr	0	1	1			2
2007 4th Qtr	0	1	1			2
2008 1st Qtr	0	0	1			1
2008 2nd Qtr	1	0	2			3
Total:	1	2	5			8

B. Percentage

Quarter	Prison	Jail	Jail/Prob.	Prob.	Other
2007 3rd Qtr	0.0%	50.0%	50.0%		
2007 4th Qtr	0.0%	50.0%	50.0%		
2008 1st Qtr	0.0%	0.0%	100.0%		
2008 2nd Qtr	33.3%	0.0%	66.7%		
Total:	12.5%	25.0%	62.5%		

Figure II.16: OUIL3 Disposition (2007)

(County did not report)

A. Count

Type	Prison	Jail	Jail/Prob.	Prob.	Other	Total
SGL NA						
Intermediate						
Straddle						
Presumptive						
Total:						

B. Percentage

Type	Prison	Jail	Jail/Prob.	Prob.	Other
SGL NA					
Intermediate					
Straddle					
Presumptive					
Total:					

Figure II.17: Straddle Cell Rates (2007)

A. Count

Prison	Jail	Jail/Prob.	Prob.	Other	Total
0	0	1	0	0	1

B. Percentage

Prison	Jail	Jail/Prob.	Prob.	Other
0.0%	0.0%	100.0%	0.0%	0.0%

Figure II.18: PV Technical Disposition by Guidelines (2007)

(County did not report)

A. Count

Type	Prison	Jail	Jail/Prob.	Prob.	Other	Total
SGL NA						
Intermediate						
Straddle						
Presumptive						
Total:						

B. Percentage

Type	Prison	Jail	Jail/Prob.	Prob.	Other
SGL NA					
Intermediate					
Straddle					
Presumptive					
Total:					

Figure II.19: PV Technical Disposition by Offense Group (2007)

(County did not report)

A. Count

Type	Prison	Jail	Jail/Prob.	Prob.	Other	Total
Offense Group 1						
Offense Group 2						
Total:						

B. Percentage

Type	Prison	Jail	Jail/Prob.	Prob.	Other
Offense Group 1					
Offense Group 2					
Total:					

Figure II.20: Overall Disposition by Offense Group (2007)

A. Count

Type	Prison	Jail	Jail/Prob.	Prob.	Other	Total
Offense Group 1	1	2	2			5
Offense Group 2	0	0	3			3
Total:	1	2	5	0	0	8

B. Percentage

Type	Prison	Jail	Jail/Prob.	Prob.	Other
Offense Group 1	20.0%	40.0%	40.0%		
Offense Group 2	0.0%	0.0%	100.0%		
Total:	12.5%	25.0%	62.5%		

Figure II.21: Overall Disposition by Offense Group by Guidelines (2007)

A. Count

Type	Prison	Jail	Jail/Prob.	Prob.	Other	Total
OG1 SGL NA		1				1
OG2 SGL NA						0
<i>SGL NA Total:</i>	<i>0</i>	<i>1</i>	<i>0</i>	<i>0</i>	<i>0</i>	<i>1</i>
OG1 Intermediate		1	1			2
OG2 Intermediate		0	3			3
<i>Intermediate Total:</i>	<i>0</i>	<i>1</i>	<i>4</i>	<i>0</i>	<i>0</i>	<i>5</i>
OG1 Straddle			1			1
OG2 Straddle						0
<i>Straddle Total:</i>	<i>0</i>	<i>0</i>	<i>1</i>	<i>0</i>	<i>0</i>	<i>1</i>
OG1 Presumptive	1					1
OG2 Presumptive						0
<i>Presumptive Total:</i>	<i>1</i>	<i>0</i>	<i>0</i>	<i>0</i>	<i>0</i>	<i>1</i>
Grand Total:	2	4	10	0	0	16

(Figure II.21 continued...)

B. Percentage

Type	Prison	Jail	Jail/Prob.	Prob.	Other
OG1 SGL NA		100.0%			
OG2 SGL NA					
<i>SGL NA Total:</i>	<i>0.0%</i>	<i>100.0%</i>	<i>0.0%</i>	<i>0.0%</i>	<i>0.0%</i>
OG1 Intermediate		50.0%	50.0%		
OG2 Intermediate		0.0%	100.0%		
<i>Intermediate Total:</i>	<i>0.0%</i>	<i>20.0%</i>	<i>80.0%</i>	<i>0.0%</i>	<i>0.0%</i>
OG1 Straddle			100.0%		
OG2 Straddle					
<i>Straddle Total:</i>	<i>0.0%</i>	<i>0.0%</i>	<i>100.0%</i>	<i>0.0%</i>	<i>0.0%</i>
OG1 Presumptive	100.0%				
OG2 Presumptive					
<i>Presumptive Total:</i>	<i>100.0%</i>	<i>0.0%</i>	<i>0.0%</i>	<i>0.0%</i>	<i>0.0%</i>
Grand Total:	12.5%	25.0%	62.5%		

Section III: HISTORICAL DATA FROM STATE JPIS SYSTEM, 2004 - 2007

Figures III.1 through III.5 present collected findings from the Michigan DOC's JPIS database.

NOTE: Ontonagon County has not participated in the JPIS initiative and therefore there is no data to populate the tables and charts in this section.

- Figure III.1: Annual ADP (2004 – 2008)
- Figure III.2: Average Length of Stay of All Inmates (2004 – 2007)
- Figure III.3: Annual Admissions (2004 – 2008)
- Figure III.4: Annual Releases (2004 – 2007)
- Figure III.5: Top Ten Offense Categories by ADP 2004 – 2008

Section IV: Inmate Characteristics: 2003 - 2008

NOTE: Ontonagon County has not participated in the JPIS initiative and therefore there is no data to populate the tables and charts in this section.

- Figure IV.1: Admissions and Detention Days (2003 – 2007)
- Figure IV.2: Admissions vs. Detention Days (2007)
- Figure IV.3: Class of Crime at Admission (2007)
- Figure IV.4: Percent Det. Days by Admit Crime Class (2003 – 2007)
- Figure IV.5: Number of Charges at Admission (2007)
- Figure IV.6: Percent Det. Days by Number of Charges at Admission (2003 – 2007)
- Figure IV.7: Percent Det. Days by Gender (2003 – 2007)
- Figure IV.8: Age at Admission (2007)
- Figure IV.9: Percent Det. Days by Age (2003 – 2007)
- Figure IV.10: Length of Stay Categories (2007)
- Figure IV.11: Percent Det. Days by Length of Stay (2003 – 2007)
- Figure IV.12: Highest Grade Completed (2007)
- Figure IV.13: Percent Det. Days by Education (2003 – 2007)
- Figure IV.14: Marital Status at Admission (2007)
- Figure IV.15: Percent Det. Days by Marital Status (2003 – 2007)
- Figure IV.16: Race (2007)
- Figure IV.17: Percent Det. Days by Race (2003 – 2007)
- Figure IV.18: Reason for Release (2007)
- Figure IV.19: Percent Det. Days by Reason for Release (2003 – 2007)
- Figure IV.20: Security Class Code (2007)
- Figure IV.21: Percent Det. Days by Security Code (2003 – 2007)
- Figure IV.22: Number of Previous Misdemeanor Convictions (2007)
- Figure IV.23: Percentage Det. Days with Previous Misdemeanor Convictions (2003 – 2007)
- Figure IV.24: Number of Previous Felony Convictions (2007)
- Figure IV.25: Percent Det. Days with Previous Felony Convictions (2003 – 2007)
- Figure IV.26: Percent Det. Days with Previous Assault Felony Convictions (2003 – 2007)